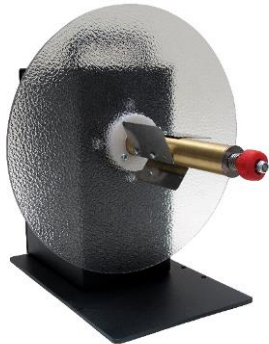


"UCAT" Heavy-Duty Label Unwinders



Unpowered and Powered Unwinders.

- All models are bi-directional.
- Large range of models available.
- Speed up to 125 cm/sec for the powered models.
- 5- Years Parts and Labour Limited Warranty.



UCAT-S

UCAT-S

This is the world's least expensive professional Unwinder. It is unpowered and it now has an adjustable "wearless" brake. The UCAT-S accepts up to 300 mm diameter rolls and up to 155 mm width, 76mm core holder as standard.

UCAT-1 Heavy-Duty Unpowered Label Unwinders

This is the classic LABELMATE Unwinder with Adjustable Speed-Proportional Braking.

Up to 300 mm diameter rolls and 155 mm width, 76 mm cores. A 255 mm width and a 25 mm to 101 mm Adjustable Core Holder, models are available. Please see the table of available models next page.

UCAT-3 Heavy-Duty Powered Label Unwinders

This powered Unwinder automatically tracks label usage and provides powered label feed at speeds up to 125 cm/sec. The UCAT-3 accepts standard 76 mm cores and rolls up to 300 mm in diameter. 255 mm width is available. It can also be used as a full-featured Label Rewinder without any special setup. LABELMATE's renowned Constant Adjustable Torque™ control system allows precise adjustment of feed speeds and rewind torque. External STOP / RUN Input included.

UCAT-40 Heavy-Duty Powered Label Unwinder

A powered Unwinder like the UCAT-3, but with an impressive 40 cm roll diameter capacity. Supplied with LABELMATE's 76 mm "Quick-Chuck"™, the UCAT-40 gives you the ultimate label Unwinder for volume production.

NOTE: UCAT-S & UCAT-1 are unpowered and do not rewind, they only unwind.

The UCAT-3 & UCAT-40 are powered and can also rewind (without the tension arm function).

All LABELMATE Products are industrial-quality, maintenance-free, and backed by a 5-Year Parts and Labor Limited Warranty, the longest in the industry.



UCAT-3-ACH



UCAT-40

P/N	MODEL	DESCRIPTION	LABEL WIDTH (mm)	ROLL DIAM. (mm)	SPEED (cm/sec)
LMU001	UCAT-S	Economy Label Unwinder. Unpowered with adjustable brake. 76mm standard. * Size: W x D x H: 300 x 365 x 320 mm.	155	300	Same as printer
LMU002	UCAT-1-STANDARD	Heavy-duty Unwinder 76mm standard. * Self-powered adjustable Speed-Proportional Frictionless Braking. Size: W x D x H: 300 x 350 x 320 mm.	155	300	Same as printer
LMU003	UCAT-1-ACH	UCAT-1 with an Adjustable Core Holder for core sizes from 25 to 101mm diameter cores. Size: W x D x H: 300 x 350 x 320 mm.	155	280	Same as printer
LMU004	UCAT-1-CHUCK	UCAT-1 with 76mm 'Quick-Chuck'. * Size: W x D x H: 300 x 385 x 320 mm.	170	300	Same as printer
LMU005	UCAT-1-10-INCHES	UCAT-1 for Labels up to 255mm wide. 76mm standard. * Size: W x D x H: 300 x 455 x 320 mm.	255	300	Same as printer
LMR009	UCAT-1-1-INCH	UCAT-1 for 25.4mm diameter cores. Size: W x D x H: 300 x 455 x 320 mm.	155	220	Same as printer

P/N	MODEL	DESCRIPTION	LABEL WIDTH (mm)	ROLL DIAM. (mm)	SPEED * (cm/sec)
LMU010	UCAT-3-STANDARD	Powered Unwinder for label rolls with 76mm core diameter standard. * Continuously adjustable feed rate. Control arm tracks label unwind usage and starts & stops unwinding automatically. Also rewinds. Size: W x D x H: 300 x 350 x 320 mm.	155	300	125
LMU011	UCAT-3-ACH	Powered Unwinder with an Adjustable Core Holder for any core size from 25 to 101mm. Also rewinds. Size: W x D x H: 300 x 350 x 320 mm.	155	280	125
LMU012	UCAT-3-CHUCK	UCAT-3 with 76mm 'Quick-Chuck'. * Also rewinds. Size: W x D x H: 300 x 385 x 320 mm.	170	300	125
LMU013	UCAT-3-10-INCHES	UCAT-3 for Labels up to 255mm wide. 76mm standard. * Also rewinds. Size: W x D x H: 300 x 455 x 320 mm.	255	300	125
LMU014	UCAT-3-1-INCH	UCAT-3 for 25.4mm diameter cores. Size: W x D x H: 300 x 455 x 320 mm.	155	220	125
LMU014	UCAT-40	Heavy-duty 400mm diameter Powered Unwinder with 76mm 'Quick-Chuck'. * Continuously adjustable feed rate. Control arm tracks label usage and starts & stops unwinding automatically. Also rewinds. Size: W x D x H: 400 x 450 x 460 mm.	170	400	125

* Standard, S, CHUCK and 10-Inches Models are available for 38-, 40-, 44-, 70-, 76- and 100 mm diameter cores. Specify when ordering.

* **SPEED:** The indicated speeds are the maximum speeds at beginning of a 76mm core roll.

MAXIMUM LABEL ROLL WEIGHT:

STANDARD: 8Kg. - 10-INCHES: 10Kg. - ACH: 7Kg. - CHUCK: 8Kg. - UCAT-40: 14Kg



Labelmate
Chaussée de Ruisbroek 290
1620 Drogenbos (Belgium)

+32 2 375 69 60
brussels@labelmate.com
BTW BE 0674 877 993

ING BELGIUM
IBAN BE89 3630 6607 1285
BIC BBRUBEBB

labelmate.com

LABEL REWINDERS OPTIONS

P/N	MODEL	DESCRIPTION
LMX457	R-16	Option available on UCAT-1-STANDARD, UCAT-1-CHUCK and UCAT-S to accept rolls up to 400mm in diameter. Factory installed.
LMX444	APG-UCAT	Optional Adjustable Paper Guide. Guides the outer edge of the label web to ensure an even roll edge.
LMX458	FLANGE-UCAT-INT	Inner flange for UCAT-3-STANDARD and UCAT-3-10-INCHES.
LMX459	FLANGE-UCAT-EXT	Outer flange for UCAT-3-STANDARD and UCAT-3-10-INCHES.

All models are bi-directional.

Shipping Weight: Approx. 11 to 14Kg.

Power: 220/240-vac 50-Hz. 120-vac 60-Hz power supply is also available.



UCAT-1-STANDARD




UCAT-1-10-INCHES



Industrielaan 8

2250 Olen


info@codipack.com

 +32 14 25 40 40

Esp 222A

5633AC Eindhoven

info@codipack.com

 +31 40 241 00 30

Specifications are subject to change without notice. Data UCAT 09/2017



Labelmate

Chaussée de Ruisbroek 290
1620 Drogenbos (Belgium)

+32 2 375 69 60

brussels@labelmate.com
BTW BE 0674 877 993

ING BELGIUM

IBAN BE89 3630 6607 1285
BIC BBRUBEBB

labelmate.com