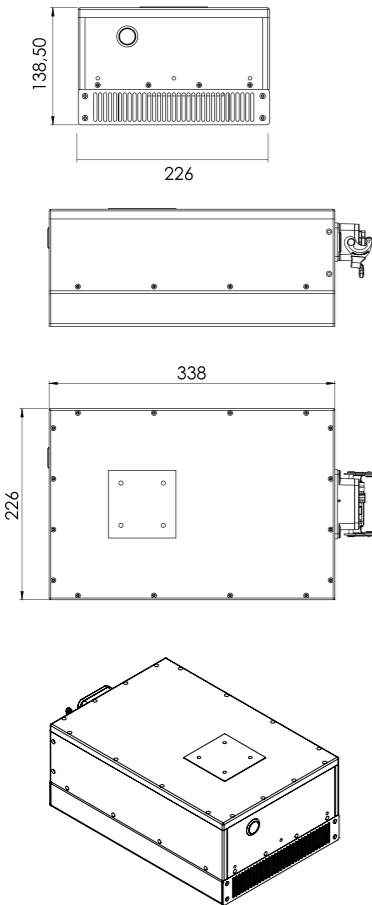


SPA2 iLumiFlex by MACSA

SMART. SUSTAINABLE. UNSTOPPABLE.



MODEL	FEATURE	SPA2 ILUMIFLEX
LASER DATA	Output Power	Up to 5W (@ 50 kHz to 80 kHz)
	Technology	YVO4 UV Laser Source, Class 4
	WAVELENGTH	355 nm
	PULSELENGTH	< 18 ns
MAIN POWER SUPPLY	Input voltage rating	100 / 240 V AC
	Frequency	50 / 60 Hz
COOLING	Power (1 Phase + N)	700 VA
	Forced Air (integrated). No external chiller required.	
MARKING SYSTEM	Maximum Scan Speed	≤12,000 mm/s.
	Maximum Production Line Speed	0-300 m/min.
	Marking Resolution	1.6 µm.
MARKING HEAD (Compact)	Marking Area	100 x 100 mm (3.94" x 3.94")
	Repetition Rate	50 - 80 kHz (Most usual), up to 150 kHz.
MARKING HEAD ACCESSORIES	The laser head is compact and designed to allow installation in restricted spaces.	Std.
	Working Distance	0 to 20 mm
CONTROL	Integrated TouchScreen	10,1"
	Head cable 5 m (16.4')	10 m (32.8') (Opt.)
	Pc with Marca software	Opt.
SOFTWARE	Scanlinux	Std.
	MarcaTouch OS 2.0	Opt.
	Marca full graphics pc softw.	Opt.
	TCP/IP protocol	Std.
	Profinet protocol	Opt.
	OPC-UA protocol	Opt.
	Ethernet/IP protocol	Opt.
Internal barcode generator	Opt.	
SAFETY	Performance level d safety kit	Opt.
ACCESSORIES	Encoder Kit - Mounting Support - Photocell Kit	
ENVIRONMENTAL CONDITIONS	Operating Temperature	0 to 40° C (32 to 104° F)
	Humidity	< 95 %, non-condensing
	Vibrations	No vibrations
	Protection Rate	DE IP54 (Dusty Environment)
DIMENSIONS	WxDxH	226 mm (W) x 338 mm (D) x 138 mm (H) 8.90" (W) x 13.31" (D) x 5.43" (H)
	WEIGHT	Net Weight: 10 kg + 8 kg (Head + Controller) Gross Weight: 20 kg

* Customizable marking area also available

CONTROLLER		SPA2 ILUMIFLEX CONTROLLER
DIMENSIONS (WxDxH)		330x265x157mm (8.90" (W) x 13.31" (D) x 5.43" (H))
TOUCH SCREEN TYPE		Capacitive Touch Screen Display
SIZE		10,1"
		1064 x 600
COLOUR		16,2M
LUMINANCE		340 cd/mq
MEMORY		2 GB
VOLTAGE		12 VDC
CONNECTIVITY		TYCO Connector
SOFTWARE		MarcaTouch™ OS 2.0 or newer
LANGUAGES		26 languages (English, Arabic, Chinese, Czech, Deutsch, Danish, Finnish, French, Greek, Hebrew, Magyar, Indonesian, Italian, Japanese, Korean, Malaysian, Dutch, Polish, Portuguese, Russian, Serbian, Spanish, Swedish, Thai, Turkish, Vietnamese)
INTERFACE		WYSIWYG technology which displays what is going to be printed.
COVER CONDITIONS		Stainless steel
IP RATE		IP54
ENVIRONMENT		0 - 40°C, Non-condensing

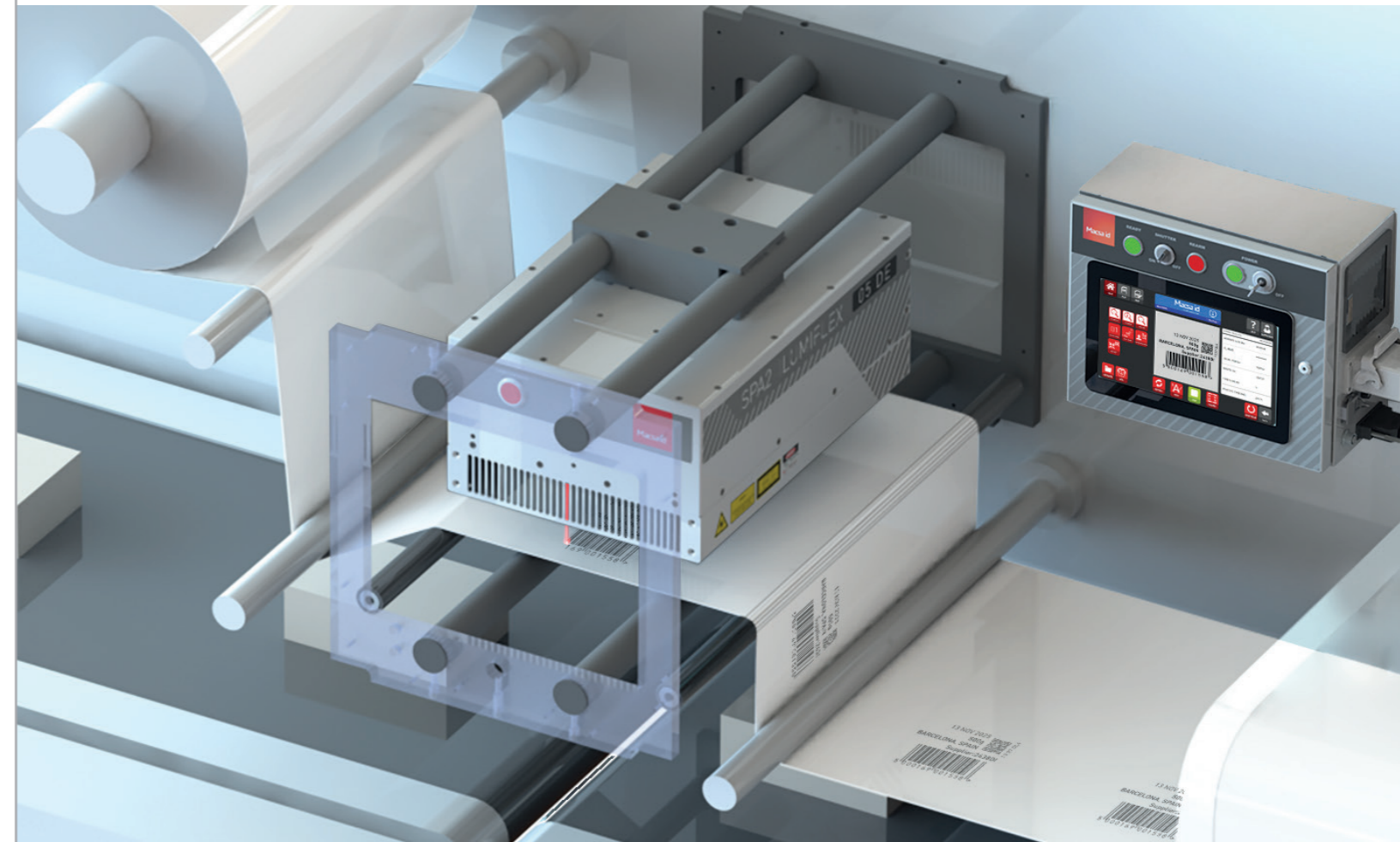


NOVEMBER 2025

Macsa id
a code you can trust

SPA2 iLumiFlex

SMART | SUSTAINABLE | UNSTOPPABLE



From Ribbon to UV Laser:
Redefining coding for flexible
packaging with unbeatable TCO.

SPA2 iLumiFlex marks a turning point: eliminating the need for ribbons and printheads. Macsa's UV laser offers non-stop productivity in the compact size of a standard TTO.



a code you can trust

Macsa id Headquarters
Pl. Pla de Santa Anna
08272 Sant Fruitós de Bages
(Barcelona)
Tel: +34 938 738 798
Spain

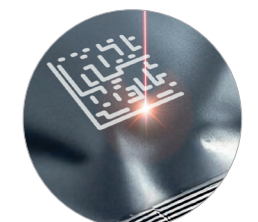
Macsa id Ceramics
C/Montanejos (Pol Fadrell)
Nave Nº13
12005 (Castellon)
Tel.: +351 229962204
Spain

Macsa id Portugal
Rua Eng. Frederico Ulrich n.
2650.
4470 - 605 Moreira Maia
Tel: +351 229962204
Portugal

Macsa id UK
13d Old Bridge Way
Shefford
Bedfordshire SG175HQ
Tel: +44 (0)1462 816091
UK

Macsa ID Malaysia
51-9-D1 Menara BHL,
Jalan Sultan Ahmad Shah,
10000 Georgetown, Penang,
Malaysia

Macsa Coding Technology
(China) Co, Ltd
East side of 2/F, 7 Building
Lijincheng Technology Industry Park
Jihua Road
Longhua Street, Longhua District 518100
Shenzhen
Tel: +86 0755-23611591
China



PRODUCT BROCHURE

The ultimate non-stop UV laser solution for every flexible packaging line with the lowest TCO.

iLumiFlex is Macsa ID's UV laser coder that replaces thermal transfer printers (TTO) in flexible packaging. It marks directly on film using light - no ink, no ribbon, no waste - delivering permanent, high-contrast codes while enabling continuous, sustainable, PPWR-compliant production, in a compact design with the same footprint as a conventional TTO printer.

Perfect marking at an incredible speed.



ESSENTIAL	EXTENDED	ADVANCED	PRO
Dynamic mode 1 TEXTLINE OF 3mm= 350 m/min 2 TEXTLINES OF 3mm= 200 m/min	Dynamic mode 1 TEXTLINE OF 3mm + QR 8X8= 60 m/min 2 TEXTLINES OF 3mm + QR 8X8= 50 m/min	Dynamic mode 5 TEXTLINES OF 4mm + QR 8X8 + EAN 13= 12 m/min	Dynamic mode 18 TEXTLINES OF 3mm + EAN 13= 4 m/min
Static mode 1 TEXTLINE OF 3mm= 15 ms 2 TEXTLINES OF 3mm= 30 ms	Static mode 1 TEXTLINE OF 3mm + QR 8X8= 110 ms 2 TEXTLINES OF 3mm + QR 8X8= 120 ms	Static mode 5 TEXTLINES OF 4mm + QR 8X8 + EAN 13= 500 ms	Static mode 18 TEXTLINES OF 3mm + EAN 13= 1500 ms

Stop stopping: End downtime and waste for good.

Traditional TTO printers force production lines to stop for ribbon changes and head cleaning, creating film waste and production losses. The iLumiFlex is specifically designed to eliminate these challenges, providing a clean, continuous, and permanent marking method.

iLumiFlex key benefits.

TTO Limitation	iLumiFlex Solution	Key Benefits
High Running Costs	Zero Consumables. Eliminates ink ribbon, thermal head replacement, and air-related costs.	Significant cost savings with unbeatable TCO.
Frequent Downtime	Continuous production. Eliminates line stoppages for ribbon changes, head cleaning, or specialized periodic maintenance.	Increased production capacity (additional units/year).
Environmental Impact	100% Sustainable. Eliminate waste ribbons and associated industrial waste.	Contributes to sustainability goals (elimination of tons of CO2 emissions annually).
Marking Fading	Permanent, damage-free mark. iLumiFlex acts directly on the film's marking layer, permanently changing its color without burning or damaging the substrate.	Immunity to surface contaminants (oil, powder, water, alcohol, heat sterilization).



Comparison of results after rubbing the marked area of the film

Performance you can measure. Results you can see.

Feature	Specification	TTO Replacement Advantage
Technology	YV04 UV Laser Source, Class 4.	Utilizes cold marking technology.
Wavelength	355 nm.	Optimized for flexible packaging film marking layers.
Output Power	Up to 5W (Targeted output @ 50 kHz to 80 kHz).	Provides higher energy margin for faster, higher-contrast marking.
Maximum Scan Speed	≤12,000 mm/s.	Superior marking speed for complex codes and demanding cycle times.
Maximum Line Speed	0-350 m/min.	Supports high-speed production lines.
Repetition Rate	50 - 80 kHz (Most usual), up to 150 kHz.	Flexibility to achieve optimal dot separation at various line speeds.
Marking Resolution	1.6 µm.	Ensures high-quality, precise coding for small characters and complex codes.
Marking Area	100 x 100 mm.	Wide marking field capacity.



Your brand. Your code. Your fit.

iLumiFlex is designed for integration into common packaging machines where TTO is traditionally used, ensuring high-quality, permanent marks on sensitive film materials, monomaterials and even D4R films.

Fully compatible with standard TTO brackets, iLumiFlex can replace traditional printers in minutes, fitting directly into existing mounts without modification.

Pillow-type packaging machines (horizontal/vertical):

Ideal for high-turnover lines, preventing product and film waste caused by downtime.

Bag feeding machines (rotary):

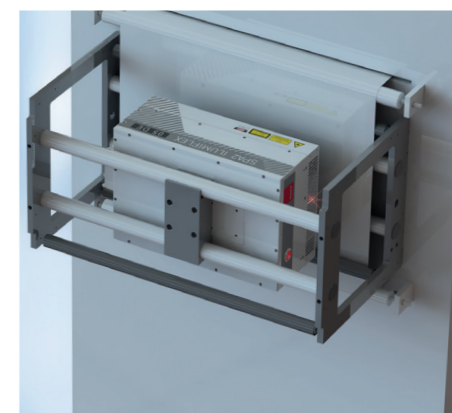
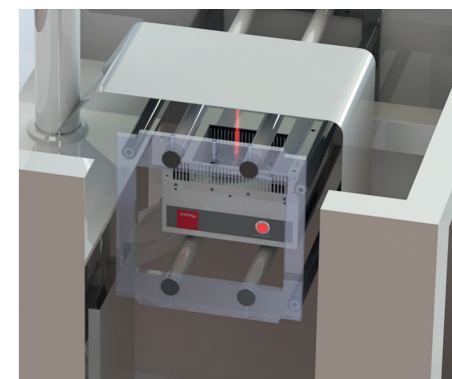
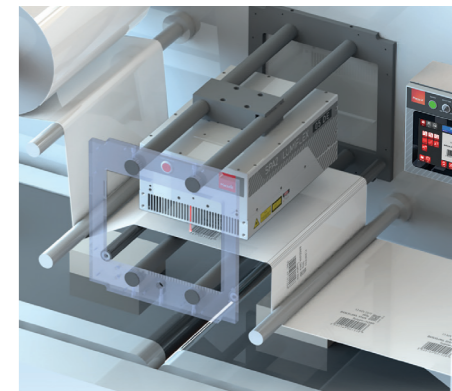
Provides non-contact, fade-resistant marking, even if oil, powder, or water is present on the pouch surface.

Stick packaging machines:

A Single device can mark multiple locations on multi-strand films, without generating dust or odors.

Flexible packaging:

Perfect for marking expiry dates, lot codes, and traceability codes on various films, including mono-materials for sustainable packaging.





EASY CONNECT

A compact head and quick-release connectors make TTO replacement fast and effortless, fitting existing mounts with no modification.

Sealed, waterproof connections ensure stable performance in dusty, harsh and washdown environments.